

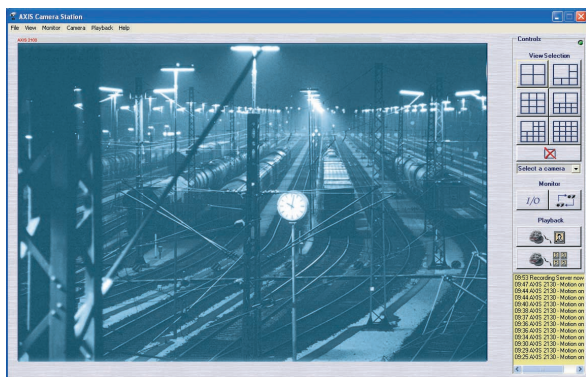
AXIS 231D+/AXIS 232D+ Network Dome Cameras

*For professional video
surveillance applications*

For demanding security surveillance and remote monitoring applications, the AXIS 231D+/232D+ Network Dome Cameras deliver superior quality Motion JPEG and MPEG-4 video in all light conditions over IP networks. As with all true domes, the Axis network dome cameras enable a continuous 360-degree pan operation and support 20 preset positions and guard tour. Fast, high precision PTZ control using mouse or Joystick makes it easy to track objects of interest. The cameras also include a complete set of network security features such as HTTPS and IP address filtering and an 18x optical zoom, autofocus lens.

The AXIS 231D+/232D+ can capture color video in light conditions down to 0.3 lux, and the AXIS 232D+, with its automatic or manually removable IR-cut filter, is able to capture black and white video in dark conditions as low as 0.005 lux.

The AXIS 231D+/AXIS 232D+ are perfect for professional security installations at airports, railway stations, prisons, warehouses, manufacturing facilities, shopping centers and school campuses.



- Full frame rate: up to 30/25 frames per second for all resolutions
- Support simultaneous streams of Motion JPEG and MPEG-4
- Built-in 18x optical + 12x digital zoom lens with auto focus
- Day/night functionality with images down to 0.005 lux (AXIS 232D+)
- Preset positions and Guard tour
- High precision controllability using mouse or Joystick

AXIS 231D+/AXIS 232D+ Network Dome Cameras



Specifications

Models	AXIS 231D+ 50 Hz/PAL AXIS 231D+ 60 Hz/NTSC AXIS 232D+ 50 Hz/PAL (Automatic day/night functionality) AXIS 232D+ 60 Hz/NTSC (Automatic day/night functionality)	Installation, management and maintenance	Installation tool on CD and web-based configuration Support for configuration backup and restore Support for firmware upgrades over HTTP or FTP, firmware available at www.axis.com
Image Sensor	1/4" Sony EXview HAD CCD	Video access from Web browser	Camera live view, sequence tour capability for up to 20 Axis cameras, customizable HTML pages, complete remote control of pan, tilt and zoom
Lens	F1.4-3.0, f=4.1 mm wide to 73.8 mm tele, autofocus with 18x optical zoom Horizontal viewing angle: 48° (wide end) to 2.8° (tele end) Focus range: 35 mm (wide) or 800 mm (tele) to infinity	Minimum Web browsing requirements	Pentium III CPU 500 MHz or higher, or equivalent AMD 128 MB RAM AGP graphic card, Direct Draw, 32 MB RAM Windows XP, 2000, Server 2003, DirectX 9.0 or later Internet Explorer 6.x or later For other operating systems and browsers see www.axis.com/techsup
Minimum illumination	Color: 0.3 lux at 30IRE B/W: 0.005 lux at 30IRE (Only AXIS 232D+)	System integration support	Powerful API for software integration available at www.axis.com including AXIS VAPIX API, event trigger data in video stream, AXIS Media Control SDK, embedded scripting support, PTZ control with Windows compatible Joystick Embedded operating system: Linux
Video compression	Motion JPEG MPEG-4 Part 2 (ISO/IEC 14496-2), Profiles: ASP and SP	Supported protocols	HTTP, HTTPS, SSL/TLS*, TCP, SNMPv1/v2cv/v3 (MIB-II), RTSP, RTP, UDP, IGMP, RTCP, SMTP, FTP, DHCP, UPnP, ARP, DNS, DynDNS, SOCKS. More information on protocol usage available at www.axis.com <i>*This product includes software developed by the Open SSL Project for use in the Open SSL Tool kit (www.openssl.org)</i>
Resolution	Resolutions 4CIF, 2CIFExp, 2CIF, CIF, QCIF Max 704x480 (NTSC) 768x575 (PAL) Min 160x120 (NTSC) 176x144 (PAL)	Video management software (not incl.)	AXIS Camera Station - Surveillance application for viewing, recording and archiving up to 25 cameras AXIS Camera Management - Video installation and management tool AXIS Camera Explorer - Basic software for viewing and manual recording See www.axis.com/partner/adp_partners.htm for more software applications via partners
Frame rate (NTSC/PAL)	Motion JPEG: Up to 30/25 fps in all resolutions MPEG-4: Up to 21/17 fps at 4CIF/2CIFExp Up to 30/25 fps at 2CIF/CIF/QCIF	Included accessories	Power supply: 24 V AC, 1.5 A Hard ceiling mounting bracket Drop ceiling mounting bracket Transparent bubble CD with installation tool, software, User manual, MPEG-4 licenses (1 encoder, 1 decoder) MPEG-4 decoder (Windows) Quick installation guide Connection module for power and alarm in/out
Video streaming	Simultaneous Motion JPEG and MPEG-4 Controllable frame rate and bandwidth Constant and variable bit rate (MPEG-4)	Accessories (not incl.)	Videotek DBH24K Dome Housing IP65 rated ¹⁾ Various mounting brackets for outdoor housing Smoked bubble AXIS 295 Video Surveillance Joystick Outdoor IP66 rated power supply AXIS PS24 ²⁾ IR Illumination (Only AXIS 232D)
Image settings	Compression levels: 11 (Motion JPEG)/23 (MPEG-4) Configurable brightness, sharpness, white balance, exposure control, backlight compensation Overlay capabilities: time, date, text, custom logo or image De-interlacing (4CIF resolution)	Approvals	EN 55022 Class A, EN 61000-3-2, EN 61000-3-3, EN 55024, FCC Part 15 Subpart B Class A, VCCI Class A, C-tick AS/NZS CISPR 22 Class A, ICES-003, Power supply: UL, CSA, EN 60950
Pan/Tilt/Zoom	Pan: 360° endless, max speed 360°/s Tilt: 0° - 90°, max speed 360°/s Zoom: 18x optical, 12x digital (216x in total) 20 preset positions Guard tour Control queue	Dimensions (HxWxD) and weight	225 x 144 x 144 mm (8.9" x 5.7" x 5.7") 1.8 kg (4.0 lb) excluding power supply
Shutter time	1 sec to 1/10.000 sec		
Security	Multiple user access levels with password protection IP address filtering, HTTPS encryption		
Alarm and event management	Events triggered by built-in motion detection, external inputs or according to a schedule Image upload over FTP, email and HTTP Notification over TCP, email, HTTP and external outputs Pre- and post-alarm buffer of 9 MB (approx. 4 min. of CIF resolution video at 4 frames per second)		
Connectors	Ethernet 10BaseT/100BaseTX, RJ-45 4 alarm inputs, 4 outputs		
Processors and memory	CPU: EXTRAX 100LX 32bit Video processing and compression: ARTPEC-2 Memory: 32 MB RAM, 8 MB Flash Battery backed up real-time clock		
Power	24 V AC, max 750 mA		
Operating conditions	5 - 50 °C (41 - 122 °F) Humidity 20 - 80% RH (non-condensing)		

Optional accessories

¹⁾Videotek DBH24K
Dome Housing IP65 rated



²⁾Outdoor IP66 rated
power supply AXIS PS24

AIRLINX Communications, Inc.
Box 253
Greenville, NH 03048
E-mail: sales@airlinx.com
Tel: (888) 224-6814
Fax: (603) 878-0530

AXIS
COMMUNICATIONS
Make your network smarter